



**BECO Ultra High
Demolition (UHD) Front**

**for
Caterpillar excavators**

Version 2022-01





**BE C O m p l e t e ,
o p t f o r B e c o**

**For every job
the right
machine.**

**Beco can
modify your
machine.**

BECO Modifications is a family owned company established in 1924 and member of the BECO Group. BECO Modifications is specialized in modifying and customizing machinery for demolition, (water-) construction, material handling and dredging market.

BECO Modifications is an official certified OEM CAT partner and has direct access to CAT parts and engineering. Our engineering team is experienced and will be able to translate an idea to a working solution, getting you the job done. All modifications are done by craftsmen and modern machinery in our own production facility which is located in the middle of The Netherlands, close to all main harbours of the Benelux.

BECO service team is trained and experienced to provide world-wide service if needed to dealers and end-users.

BECO modifications: Smart, Solid, and your helping partner in modifications.



Extending the range

BECO Modifications builds Ultra High Demolition(UHD) configurations which are not available ex works Caterpillar.

Our UHD fronts are specially developed for the Caterpillar 374 and 395 model range, to bring bigger tools to greater heights, so your productivity will increase.

These smart and solid solutions engineered by BECO Modifications will give you more flexibility in configuring the right machine for getting you the job done.

BECO Modifications uses genuine CAT parts allowing your local CAT dealer to offer genuine spare parts and support worldwide easily.

BECO Modifications UHD's and Caterpillar excavators are the perfect combination which will bring your productivity to higher heights.

Documentation

BECO supplies modifications including all required documentations

1. One CE mark for the complete machine
2. 2A Declaration of Conformity for the complete machine
3. Workcharts in the cabin
4. Safely decals
5. Addendum to the

- operators manual
- parts manual
- workshop manual



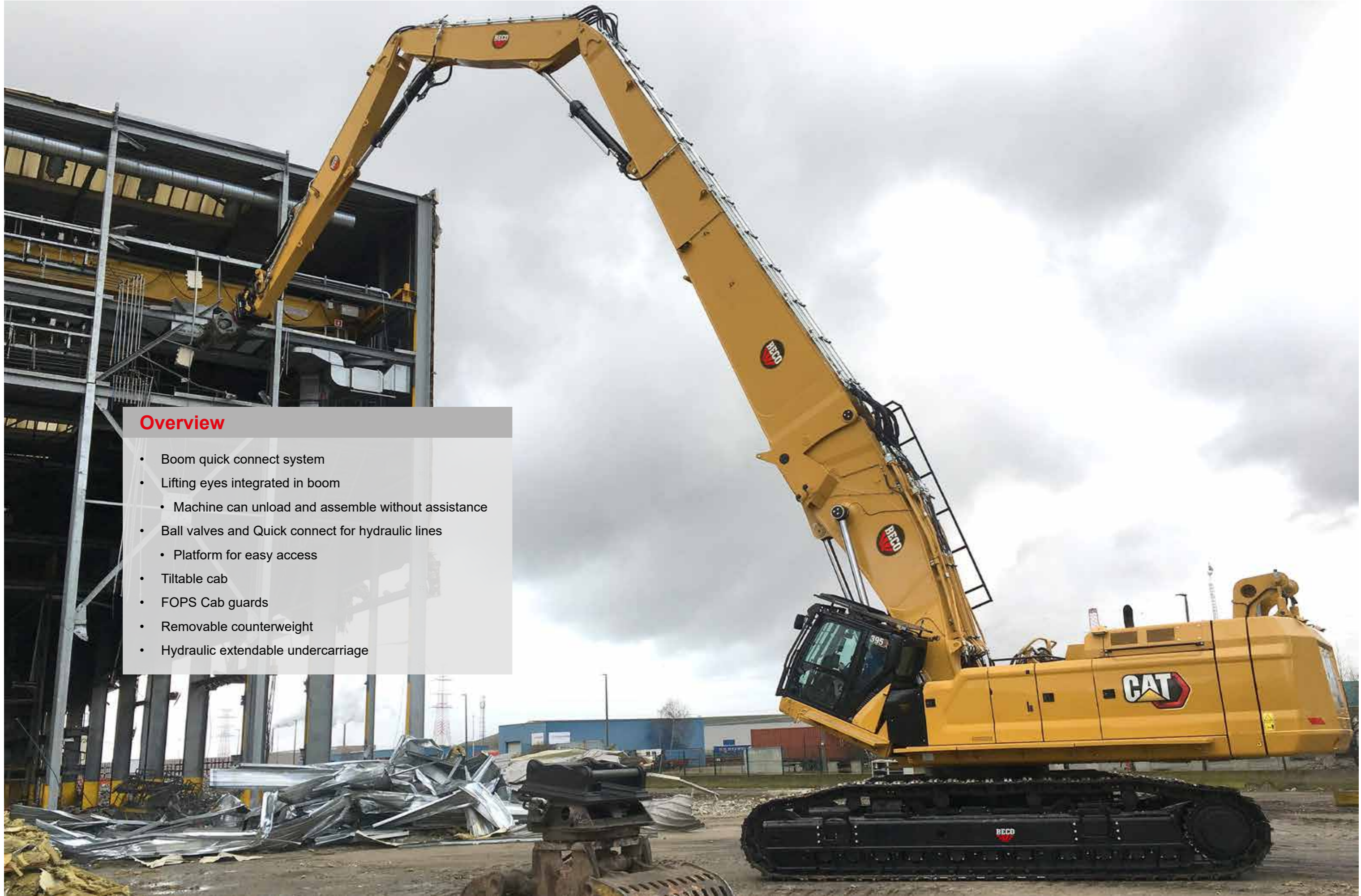
BECO | MODIFICATIONS 

**PREFERRED
SUPPLIER
OF**



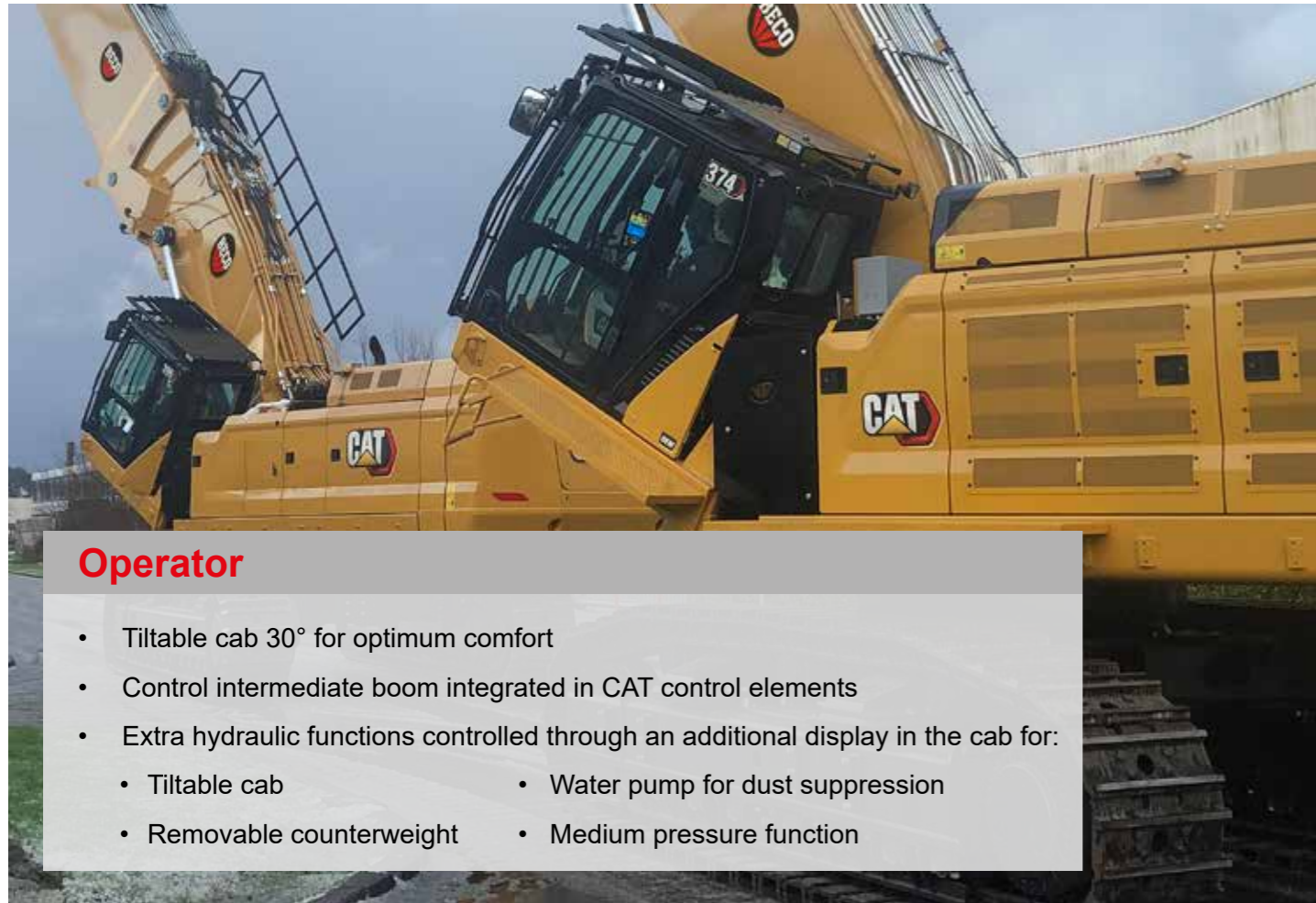
Ultra-High Demolition configurations

Model:	Weight (metric tons)	Max pin height (m)	Max horizontal pin reach (m)	Max Tool weight (kg)	Page
374 Extended Retrofit (20m)	100	20	18	7.500	8
374 UHD (33m)	88	33	19	3.000	9
374 UHD (39m)	104	39	22	3.000	10
model:					
395 UHD (27m)	102	27	20	5.000	11
395 UHD (36m)	130	36	24	4.000	12
395 UHD (40m)	128	40	28	2.500	13
395 UHD (42m)	116	42	23	3.000	14



Overview

- Boom quick connect system
- Lifting eyes integrated in boom
 - Machine can unload and assemble without assistance
- Ball valves and Quick connect for hydraulic lines
 - Platform for easy access
- Tilttable cab
- FOPS Cab guards
- Removable counterweight
- Hydraulic extendable undercarriage



Operator

- Tilttable cab 30° for optimum comfort
- Control intermediate boom integrated in CAT control elements
- Extra hydraulic functions controlled through an additional display in the cab for:
 - Tilttable cab
 - Water pump for dust suppression
 - Removable counterweight
 - Medium pressure function



Undercarriage options

- Hydraulic assist for standard mechanically variable undercarriage
- Hydraulic variable gauge undercarriage



Versatility in design

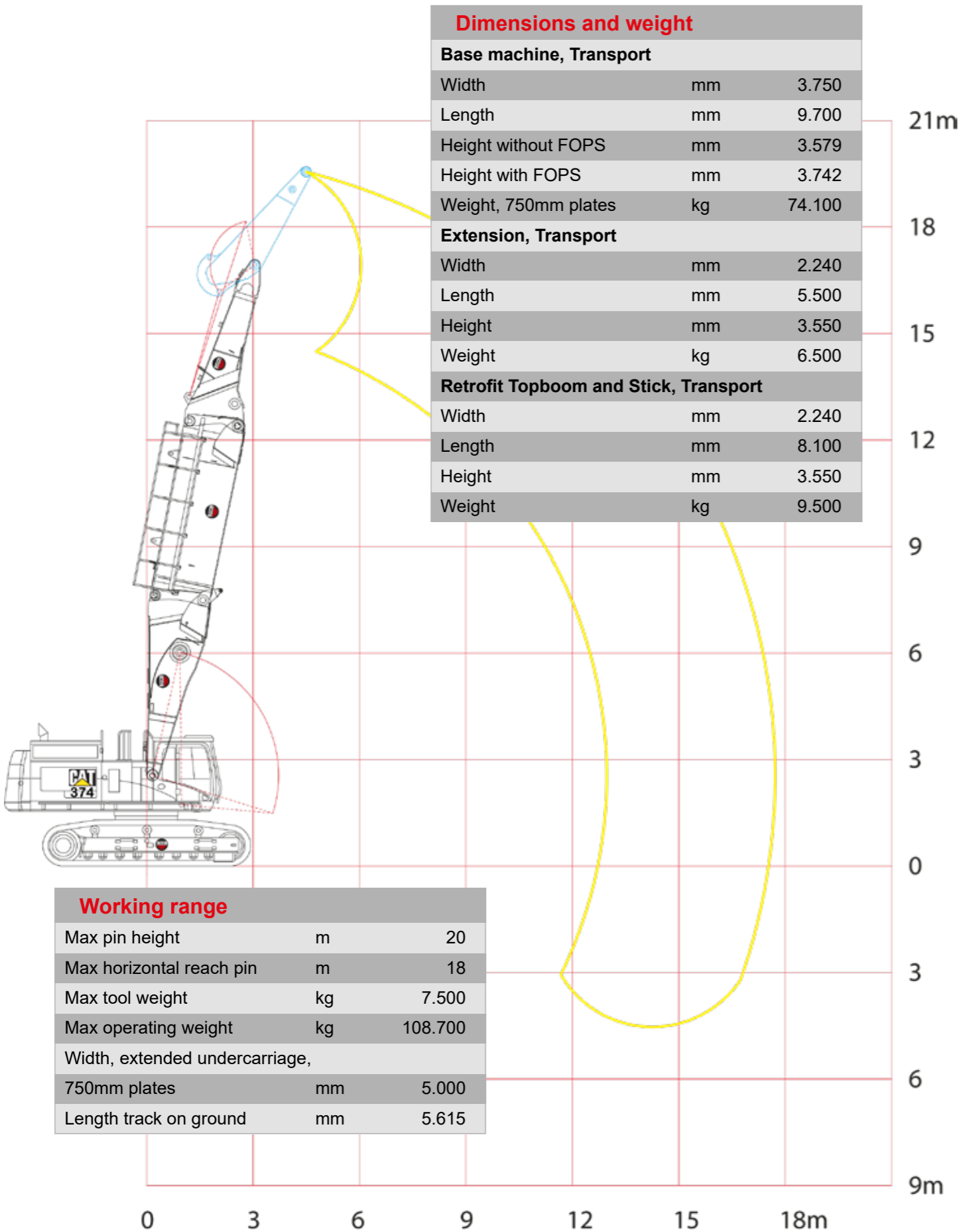
Customer specific configurations. The design process allows for custom built UHD machines, even per individual machine. This allows the customer to specify a machine best suited to their needs. The dimensions and capacity of the front can be adjusted. And the transport dimensions and weights can be varied to comply with local transport legislation.



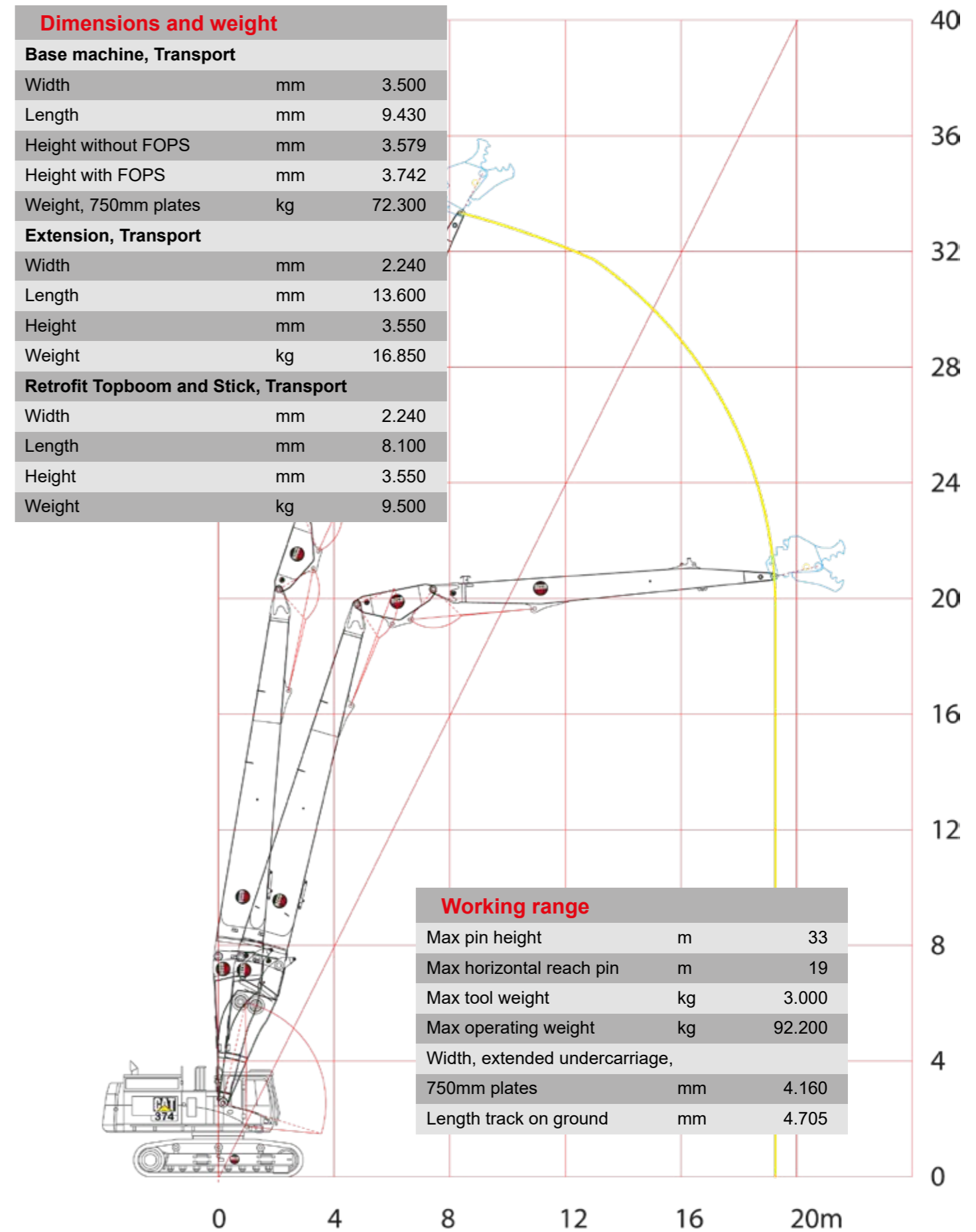
Removable counterweight

A removable original counterweight, with added weight on the base machine. This allows for a higher stability while keeping the base machine within a transportable weight limit. The removable counterweight can be lowered onto the ground or directly onto a trailer for transport.

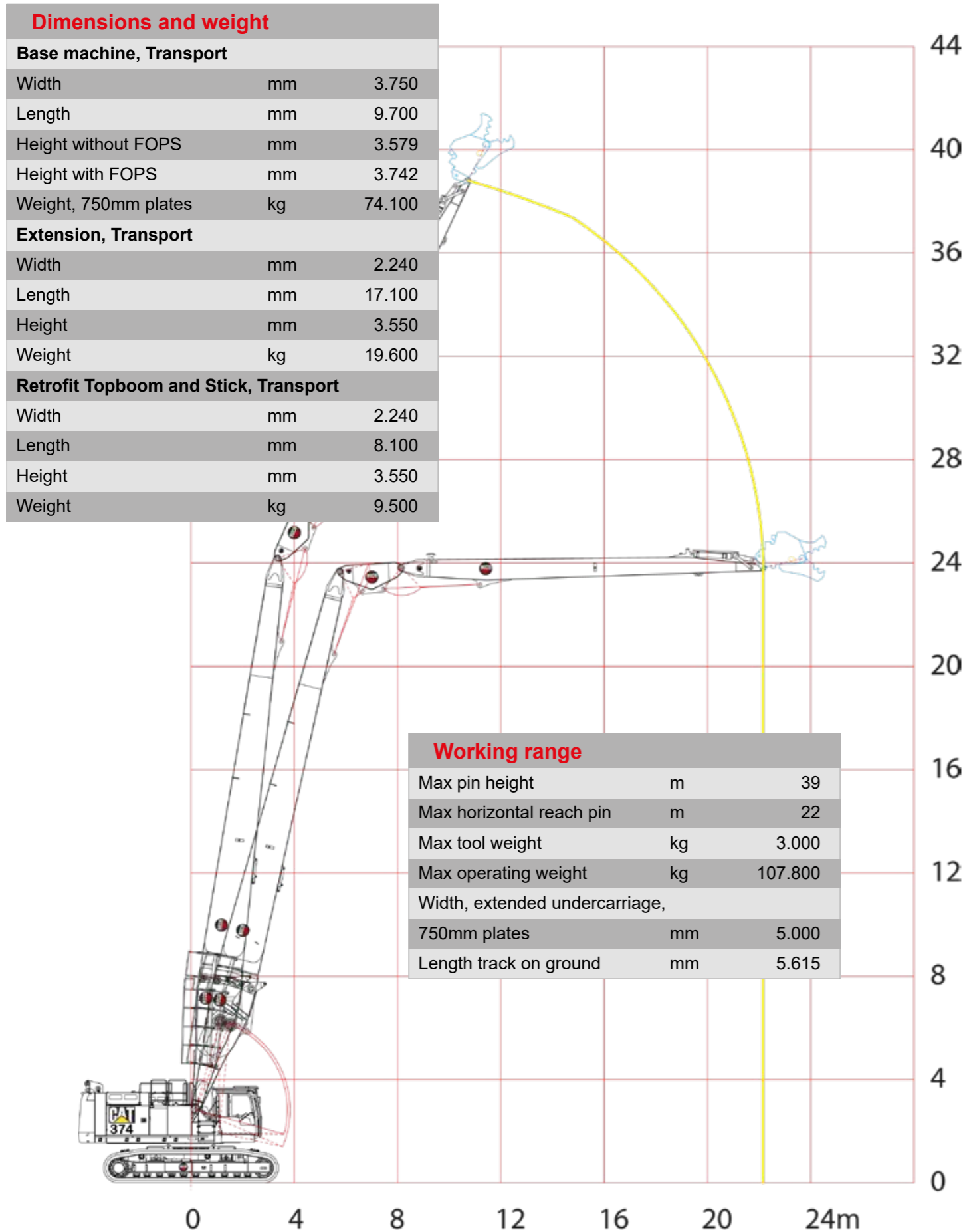
Specifications 374 - 20m



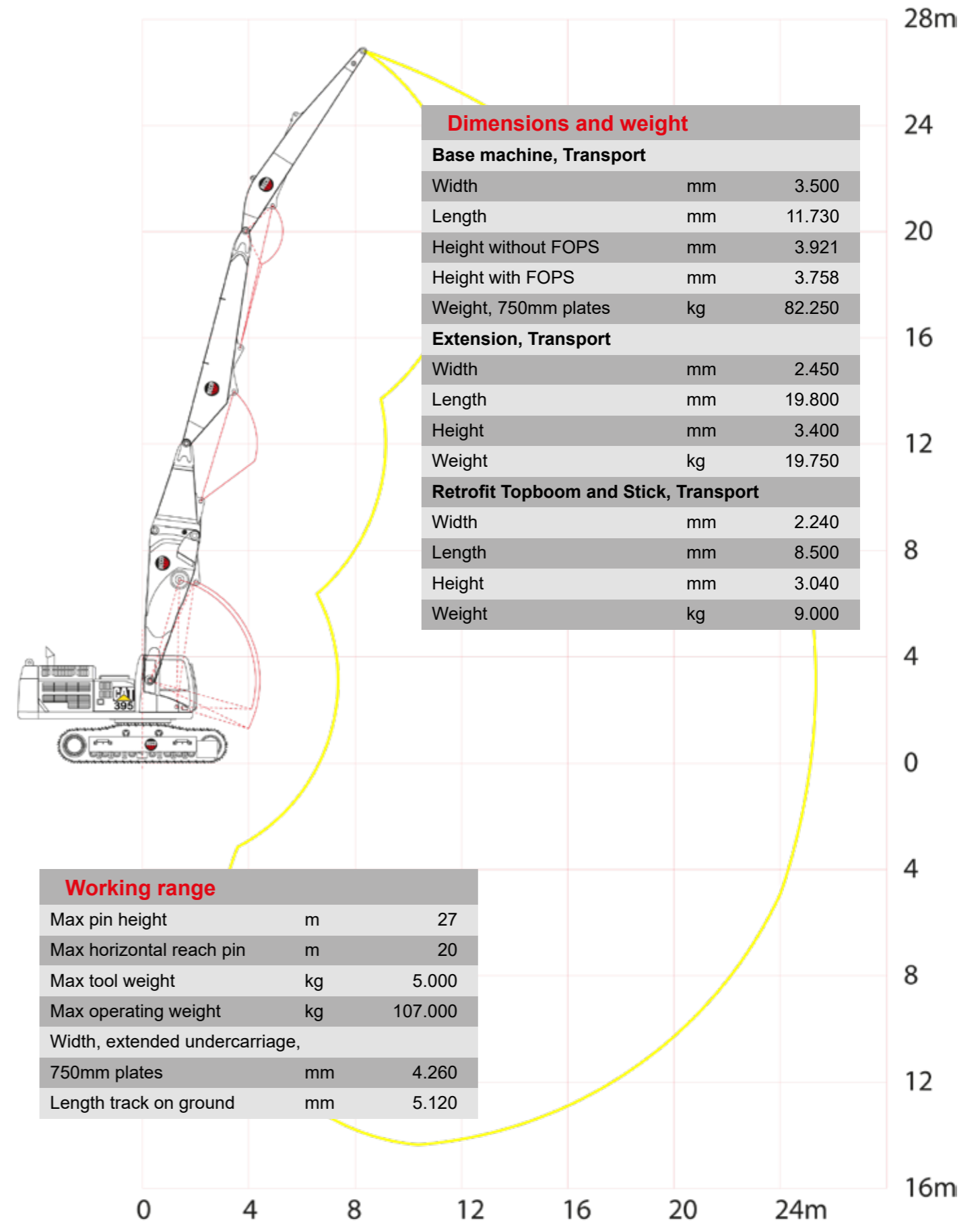
Specifications 374 - 33m



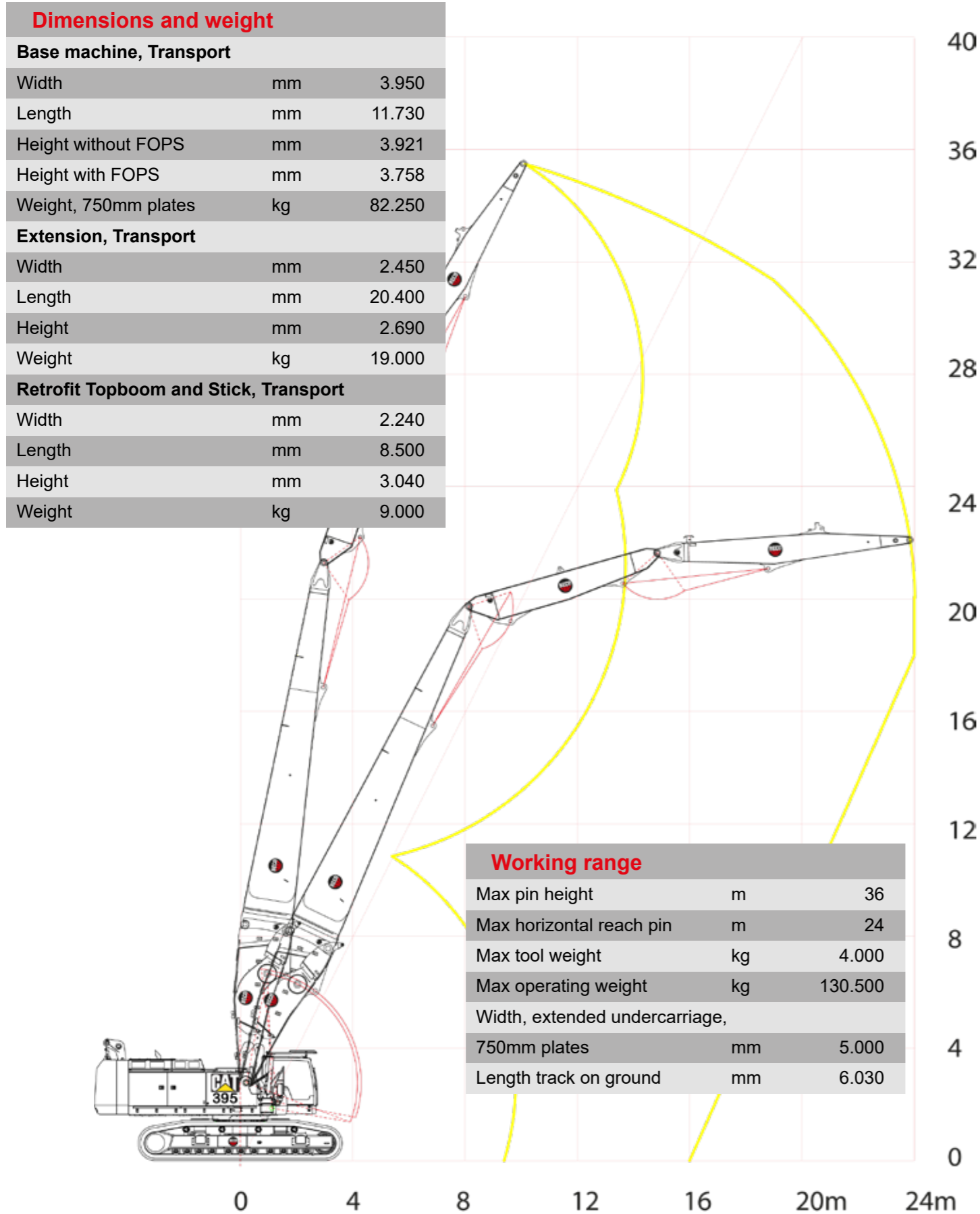
Specifications 374 - 39m



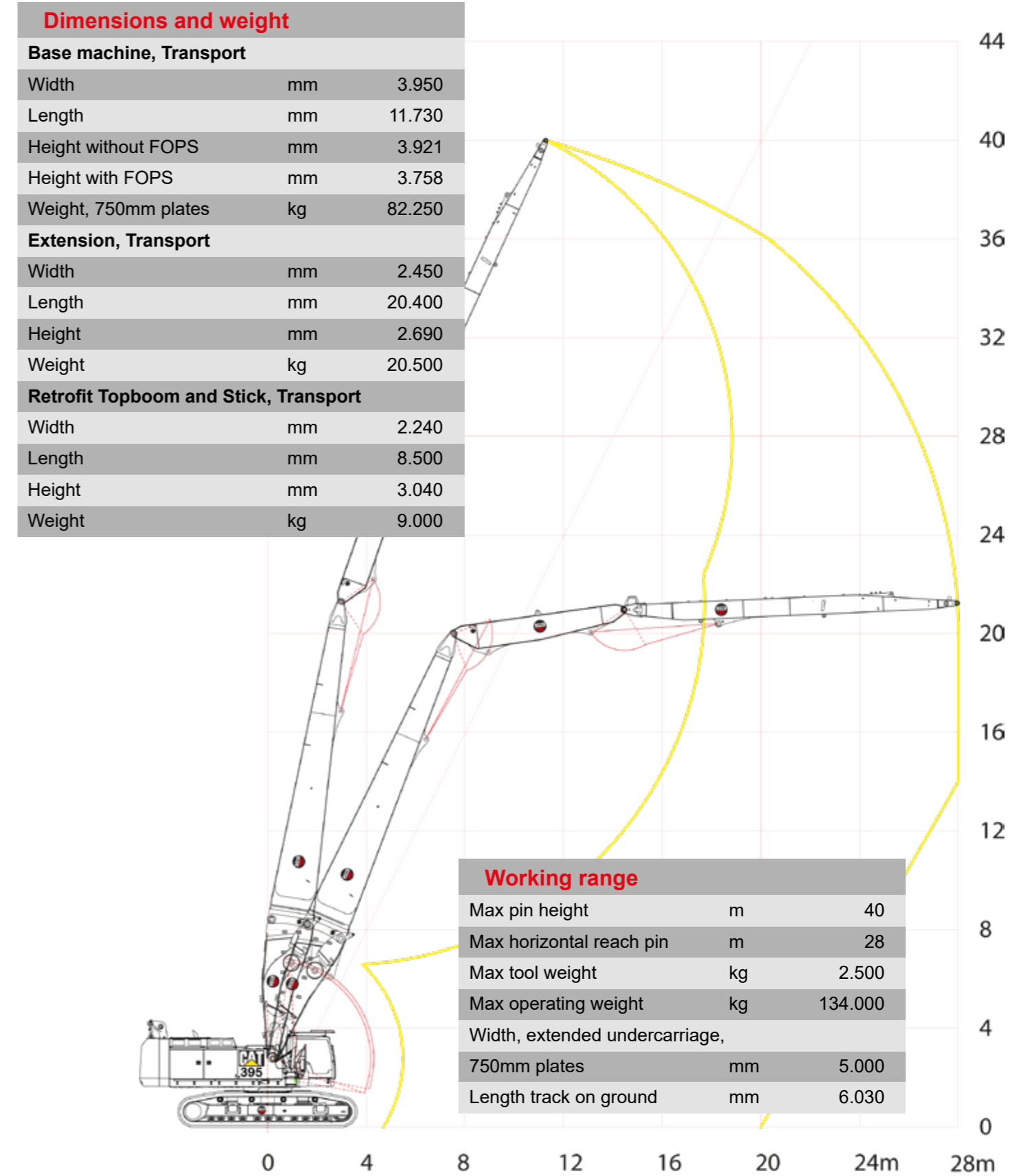
Specifications 395 - 27m



Specifications 395 - 36m

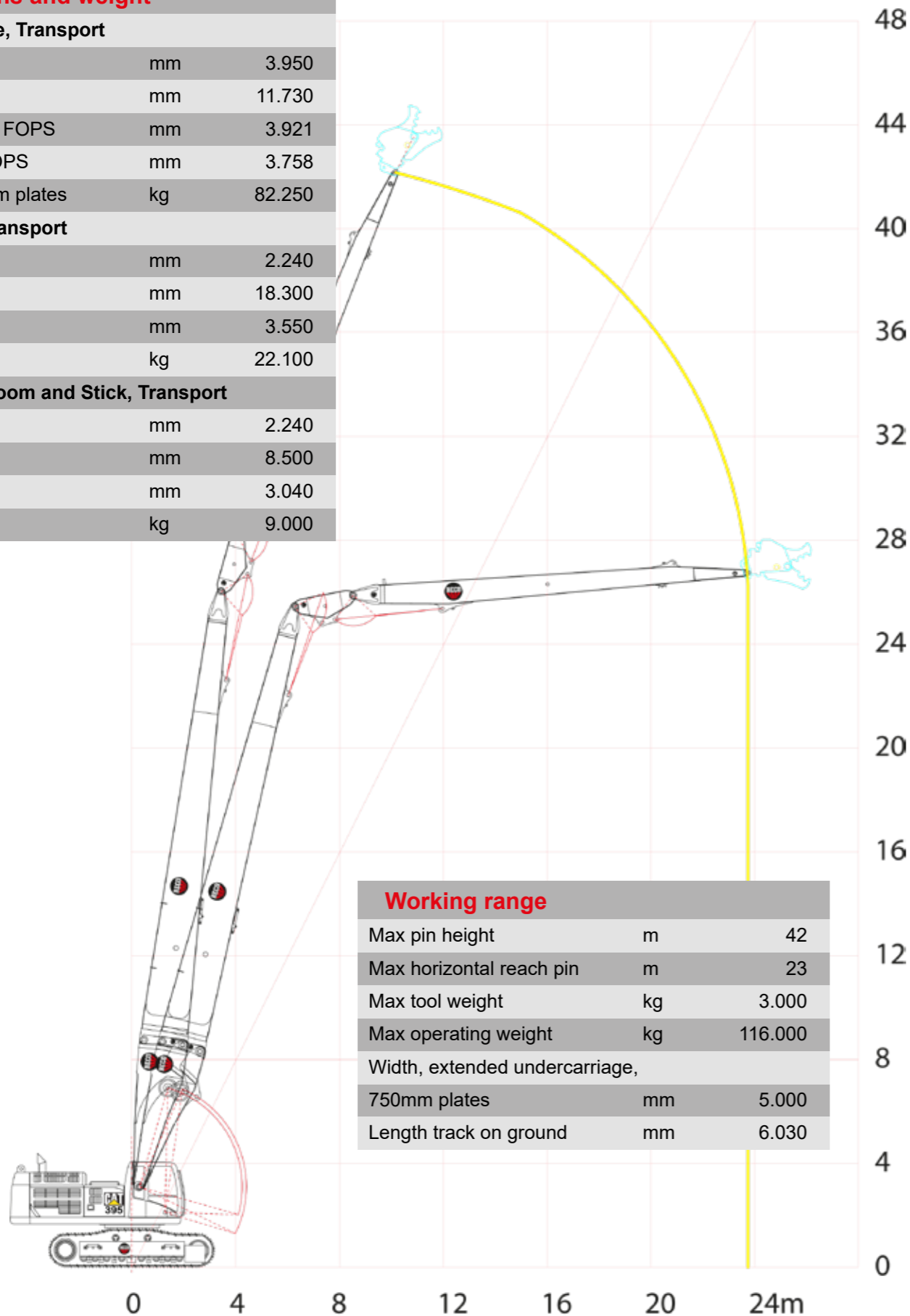


Specifications 395 - 40m



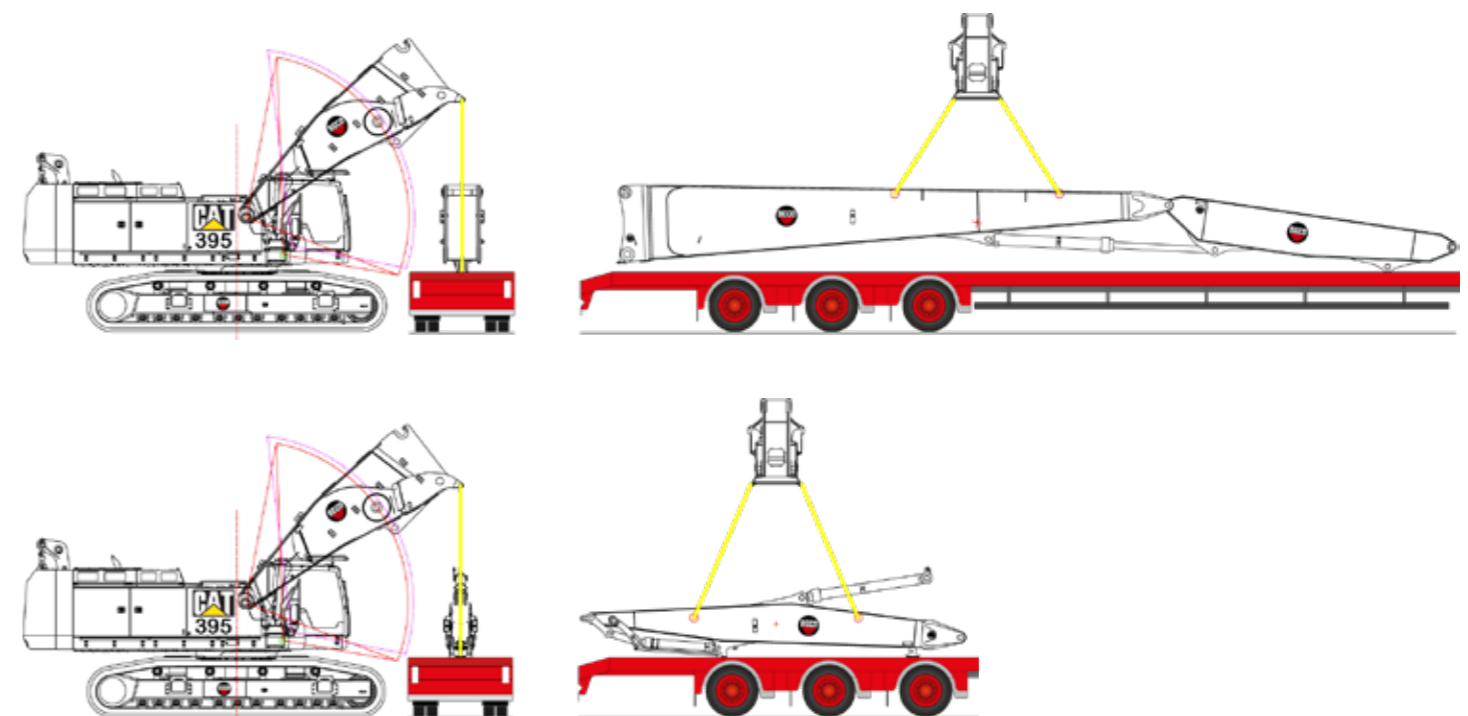
Specifications 395 - 42m

Dimensions and weight		
Base machine, Transport		
Width	mm	3.950
Length	mm	11.730
Height without FOPS	mm	3.921
Height with FOPS	mm	3.758
Weight, 750mm plates	kg	82.250
Extension, Transport		
Width	mm	2.240
Length	mm	18.300
Height	mm	3.550
Weight	kg	22.100
Retrofit Topboom and Stick, Transport		
Width	mm	2.240
Length	mm	8.500
Height	mm <td 3.040	
Weight	kg	9.000



Loading for transport

Beco UHD modifications are able to load, unload and build themselves without aid of other machines or extra extensions. This gives more flexibility in transport planning and easier assembly.



© 2022 BV Beco. All rights reserved. Designs and technical specifications of the products included in this documentation could be subject to further development and may therefore deviate from the actual properties. Subject to misprints, printing errors and modifications. Supply and delivery in accordance with the terms and conditions of the Metal Workers Union (Metaalunie), filed at the Registry of the District Court of Rotterdam, as set out in the last filed copy.





Smart. Solid.

BECO | TRANSPORT

Tipper trailers and hooklift carriers for agricultural, earthmoving, landscaping and industry.

BECO | ATTACHMENTS

Equipment and attachments for excavators, wheel loaders and cranes.

BECO | MODIFICATIONS

Modifications and components for excavators, wheel loaders, dump trailers and construction machines.

BECO | TRAILERS

Trailers for exceptional transport, such as (semi-)low-loaders, flat trailers and semi-trailers. Extendable as standard and multi-axis, to tailor-made solutions to your needs.

BECO | STEEL STRUCTURES

Customized steel structures for onshore, offshore and industry.

BV BECO

De Limiet 18

T: +31 (0) 347 - 323100

4131 NR Vianen (Ut.)

F: +31 (0) 347 - 377780

The Netherlands

E: info@beco-group.com

www.beco-group.com

www.facebook.com/beco.vianen